

Exhibitor's Declaration

Under the new requirements of the Australian Tax office at 1st July 2000, exhibitors are required to supply the following information. Failure to do so may require the Dorrigo Visual Arts Group to withhold up to 48.5% of the value of any Fine Art sold and/or prize money awarded.

PLEASE ANSWER THE FOLLOWING:-

1. Are your Art/Craft activities pursued only as a hobby, and not for profit.

YES / NO

2. If your Art/Craft activities are pursued for profit please supply your ABN _____

Name _____

Address _____

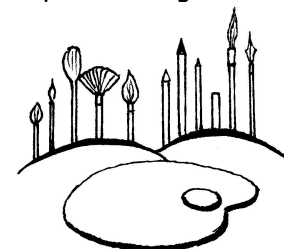
Postcode _____

Signature _____ Date ____/____/____

Please send Entry forms and Cheques payable to
Dorrigo Visual Arts Group
69 Kurrajong Street
Dorrigo NSW 2453

2016Dorrigo Show Art Competition

Organised by the Dorrigo Visual Arts Group



Section 19 - Fine Arts

Classes and Awards

Class 1 Open 1st - \$200 2nd - \$100

Class 2 Works on Paper 1st - \$200 2nd - \$100

Special Awards

Champion Exhibit (Acquisitive Award) \$600

Donated by the Bellingen Shire Council

Encouragement Award for Amateur Artists \$250

Donated by the Bellingen Shire Council

Ulla Mattas Memorial Award for People or Portrait

Donated by G & A Cork Trust \$200

Drawing Award recognising traditional drawing skills

Donated by Barbara Dowling \$200

Non-Traditional Painting Award \$200

Sculpture (any medium) (Enter in Class 1-Open) \$200

People's Choice Award 1st - \$100

2nd - \$50

CONDITIONS OF ENTRY

1. All entries must be the work of the exhibitor, completed in the last two (2) years, and not previously exhibited in any Dorrigo competition.
2. There is a limit of **FOUR(4) entries per exhibitor** in total.
Size: Paintings: Two (2) only Maximum 1 square metre in area, inc. frame. Remainder up to a maximum in area of 500 sq cms including frame.
Sculpture: Height 75 cm, Width 50cm
3. All Entries must have clearly marked on the back: **Name of Artist, Title, Medium, Price, or NFS (Not for Sale)** Paintings must be framed, with cord, ready to hang
4. **Entry fees: - \$10 per exhibit.**
5. A commission of 20% will be deducted by the Dorrigo Visual Arts Group on all sales.
6. Exhibitors must be over the age of 16 years.
7. Software-produced print media, folk art and china paintings are ineligible for any class.
8. Exhibits which are "Not for Sale" are ineligible for the Champion Acquisitive Award.
9. Professional artists (i.e. those who have an ABN for art sales) are ineligible for the Encouragement Award. Only Amateur artists are eligible for this award.
10. The committee will take all care with exhibits, but accepts no responsibility for loss or damage.
11. All exhibits will be displayed if possible, and if space allows, but the committee reserves the right to reject any entry.
12. The judge's decision is final.
13. Exhibits not collected by 5pm on Sunday 27 November will be left in the Show Secretary's Office.
14. Storage fees will be charged for entries not collected at the time stated.

CLOSING DATE FOR ENTRY FORMS 4pm Monday 31 October 2016

Send Entry Forms and Cheques payable to Dorrigo Visual Arts Group 69 Kurrajong Dorrigo NSW 2453.

DELIVER ENTRIES Dorrigo Showground Pavilion Monday November 21 between 11am and 4pm

JUDGING and PREVIEW NIGHT SHOW DATES

7.30pm Wednesday 23 November
 Saturday & Sunday 26 & 27 November

COLLECT UNSOLD EXHIBITS

4-5pm Sunday 27 November

Entry Form 2016

Name _____
 Phone No _____ Mobile _____
 Address _____

Office Use	Title of Entry	Medium	Class	Price

Entry fee of \$10 for each entry _____ Total \$ _____

I will deliver my exhibits on **Monday 21 November** between 11am & 4pm
 I will collect my unsold exhibits between 4pm & 5pm on **Sunday 27 November**.
 I have read and agree to be bound by the conditions of entry.

Signed _____

IMPORTANT: Please read and sign Australian Tax Office Requirement OVERLEAF

(Please cut and send back pages 3 and 4 only with your entry fees.)